

DCEC Newsletter



published by
the door county environmental council, inc.
p.o. box 114, fish creek, wi 54212

phone 920-743-6003
fax 920-743-6727
email dcec@itol.com

www.dcec.us

Summer 2006

**Environmental News
for Door County**

*Make a Legacy Bequest to
DCEC see back page for
details! See page seven to
Join!*

Help! We're Being Invaded!

DCEC's Annual Summer Program

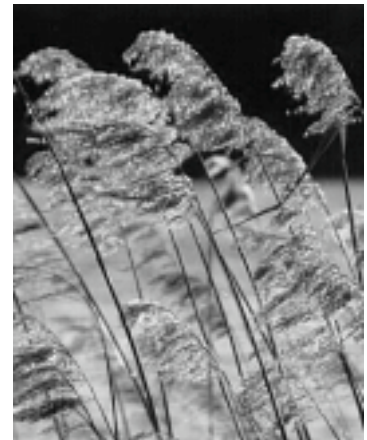
MARK YOUR CALENDAR FOR WEDNESDAY, AUGUST 16TH,
7:00 p.m. at the Baileys Harbor Town Hall, corner of Highway 57 and
County EE/F. It's DCEC's Annual Summer Program! Our summer program
presenters will be addressing invasive plant and animal species and their
impacts and detrimental effects on native species.

We are fortunate to have Patrick Robinson, UW/GB terrestrial invasive
plant specialist, and Chris Pagels, WDNR, aquatic plant education outreach
coordinator as joint presenters. They will be explaining how we, as property
owners and concerned citizens, can become active in the efforts to control
these nasty invaders.

Part of the presentations will deal with proper identification of the
invaders and proper control methods for each. Right now, as an example,
phragmites plants are growing unchecked along our highways. Soon, if
nothing's done, they will take over all roadside areas.

A question/answer session will follow the power-point presentations. Come early as seating is limited.

Bring a friend, bring everyone! Free refreshments follow the free program. [See related story page three]



Can you identify this plant?

CAFO Regulation Changes: You Are Needed!



A typical factory farm in Iowa.

YOUR SUPPORT IS NEEDED FOR CRITICAL CHANGES in
WDNR policies governing *Centralized Animal Feeding Operations*.
The Wisconsin Department of Natural Resources Board has proposed
changes in NR 243, which regulates these operations. This action was
the result of over four years of study of water-quality problems
resulting from manure spills and mismanagement by a few large feed
lot operators.

Present regulations do not address problems caused by winter
manure spreading on frozen ground and less-than-responsible manure
applications during other times of the year. While most operators are
conscientious when using animal waste from their facilities, there are
still many episodes of stream pollution, fish kills and water supply
contamination. (52 such events in Wisconsin for 2005).

[see MEGA-FARMS page six]



DCEC Incorporated in 1971 under the laws of Wisconsin as a nonprofit, tax-exempt corporation

Big Time Municipal Discharges & Your Waters

by Jerry Viste, DCEC Executive Director

A LOT OF ATTENTION is being given to *non-point sources* of polluted run-off agricultural water that help to overload the nutrient levels in our surface waters. This is one area where we are focusing major correction efforts. Much money is being spent to correct deficiencies and remedy existing and future problems. When all of the farm and commercial violations have been corrected, we would presume that our nutrient overload problems will be eliminated. We would be wrong. They will be diminished, but not eliminated..

The role point sources like *municipal treatment plants* play in the total overload of nutrients in our Bay and Lake has been downplayed and mostly ignored. This is a major concern. We need to correct the nutrient (phosphorus/nitrates) problem that originates from the combined wastewater discharges of many municipal treatment plants.

Do you wonder how much effluent a city discharges into our Bay? Here's an example: the Green Bay Metropolitan Sewerage Plant discharges an average of 40 million gallons each day. Each of the Fox River communities also discharge comparable amounts, with careful estimates of over 210 million total gallons into Lake Winnebago, and the Wolf and Fox Rivers. Nearly all the phosphorus and nitrates from those treatment plants makes the journey downstream, ending up in Green Bay and, ultimately, Lake Michigan.

Why is this a major concern? Scientists studying the Bay (Vicky Harris, Sea Grant, UW/GB, et. al.) have found phosphorus levels in the upper Bay to be at 230 mg/l. This is five times the recommended maximum of 45 ppm! Little wonder that Federal and State agencies have ranked the lower Fox River Basin as the #2 worst polluted in Wisconsin. (Only the Milwaukee

County Basin ranks lower!)

While nutrient levels diminish, as natural currents in Green Bay disperse those nutrients northward into deeper water and wider areas, Door County's western shore small bays and harbors serve as efficient collectors. Once the currents carry the nutrients beyond Door County, Lake Michigan's currents move them southward along the east shore of the County.

This is a MAJOR source of nutrients that feed the cladophora, eurasian milfoil and a host of other water-borne plants that have become such a nuisance in our bays, on our beaches and waterfront areas.

To eliminate the problem these aquatic plants cause, we must diminish the source of the nutrients that feed them. Even when all non-point sources have been eliminated, we will still witness increasing nutrient levels in our Bay. A lot of pressure needs to be focused on those agencies that have ultimate control over municipal discharges.

This is the only way the problem can be addressed and nutrient discharges eliminated.

Under NR 211, municipalities can develop their own discharge limitations if they are more restrictive than the provisions of NR 220.

In the interest of bringing those nutrient levels down to an acceptable range, we all need to become involved and use *the political process* to ensure that our water resources again are restored. The problem of "green stuff" is only going to get more serious as long as the nutrients are there.

Contact your federal, state and local officials to let them know you want some changes made in the permitted levels of nutrient discharge. It can be done, but only if you take action!

[Ed. Note: Last month, the Wisconsin DNR revised the effluent discharge permit of a few Green Bay industries to allow higher phosphorus discharge rates for those select industries.]



Large Municipal Treatment Plants, like this one on Chesapeake Bay, are feeding our "Green Stuff" with phosphorus discharges.

Save Our Trees—Leave Your Firewood Home!

QUIETLY MULTIPLYING AND seeking new territory to decimate, a tiny metallic green beetle has killed millions of ash trees across the Midwest. The Emerald Ash Borer is slowly asserting itself around the lower Great Lakes causing severe losses of established ash trees.

First found in suburban Detroit four years ago, these fast-spreading beetles have killed more than 15 million ash trees in Michigan alone. Michigan has taken drastic action to control the insect. Every ash tree within a half-mile of any infested area, is cut down, fed into a wood chipper and destroyed by burning.

Humans likely helped spread the ash borer by unintentionally transporting infested firewood from place to place. Some states have already imposed a strict quarantine that prohibits the movement of ash logs, nursery stock or firewood into or out of an infested area.

In Wisconsin, the Natural Resources Board has approved a rule prohibiting visitors from bringing firewood from outside the state into Wisconsin state parks, forests and other DNR lands. The rule went into effect April 1, 2006. Private campground owners should also prohibit, confiscate and destroy illegal firewood.

Tracking the ash borer is difficult. It can be several years before their damage is evident. These bugs typically attack the top of a tree first. By the time it's obvious that a tree's infested (telltale signs: dying branches and shoots that pop out desperately along the trunk) it's usually too late to save it. Some treatments are available for healthy trees, but these pesticides are useless if the ash borers have started to burrow beneath the bark of a tree.

Our best solution is absolute zero-tolerance for movement of any ash products. This insect is believed to have arrived in Detroit several years ago as an unintentional stowaway in wooden packing materials. Native to northern China, eastern Russia, Mongolia, Japan and Taiwan, the ash borer is considered a minor pest in those countries where trees have developed natural defenses to keep them in check.

Adult ash borers, each barely larger than a thumb-nail, gnaw their way out of trees in early June. They lay their eggs on the bark of fresh trees. Once the larvae hatch, they burrow into the tree and carve serpentine



A Shiny Adult Emerald Ash Borer



Lemon-Colored Beetle Larve

Wisconsin's strategy is guided by the national Emerald Ash Borer Science Advisory Panel. Its success relies heavily on federal funds. Wisconsin will constantly evaluate and may change this policy based on new science-based management options, available funding, and any national strategic changes.

Because of our annual influx of travelers from states already experiencing damage from the emerald ash borer, most recently Illinois, we all need to be especially watchful for these decimating creatures in Door County. Leave firewood at home. Use local sources for your firewood. Contact local DNR Forester Bill Ruff at 920-746-2880 if you suspect infestations in ash trees on your property.

tunnels in the phloem and outer sapwood. Trees eventually die because these burrows cut off the movement of nutrients through the tree.

There are chemical treatments available to protect ash trees from ash borers, but they are not 100 percent effective. If ash borers are found in Wisconsin, the current plan calls for all ash trees within one-half mile of infested trees to be removed.

Chemically-treated trees will also be cut and destroyed if they fall within this eradication zone. The decision to treat your trees is yours, but as long as eradication is planned, treated trees will not be given any special consideration.



Beetle Exit Hole



An Infested Tree

Renewable Energy Keeps DCEC on "Task"

A FEW YEARS AGO, DCEC established a Renewable Energy Task Force (RETF). The RETF is filled with motivated volunteers who enthusiastically took on the task of promoting renewable energy in Door County.

In February of 2005, RETF set out to evaluate how much interest there was in powering Door County through the use of community wind generation. Public reaction was overwhelmingly positive!

So, RETF formed a subcommittee dealing exclusively with wind energy. After a highly energizing and exhausting year, *Community Wind Energy LLC* was formed in May as a limited-liability corporation. [See related article page five].

RETF's also been engaged in other areas of renewable energy promotion. One project is the *Door County Renewable Energy Resource Directory*. This will be a directory of persons in the Door County area who are willing to "go public" with their renewable energy installations.

The purpose of this first directory is to let people know we already have renewable energy in the County, as well as to provide a list of people who have volunteered to share renewable energy information to interested parties. If you're an installer, designer or owner of a renewable energy system and haven't been contacted yet about being a part of the Resource Directory, please contact Don Pardonner at 920-839-1182 or donpardonner@dcwis.com.

Another first this year was an onsite class by RETF

entitled *Renewable Energy - Is It Realistic for Door County?* This four-session class was offered through *The Clearing* and soon developed a waiting list. Attendees gave the class excellent reviews.

The four subjects covered dealt with solar domestic hot water, green/sustainable architecture & building materials, solar electricity/photo-voltaic and geothermal. This class will be offered twice a year. The forthcoming fall class location will be announced soon.

As conservation is a key factor in renewable energy, to promote conservation, RETF is sponsoring a series of articles in *The Peninsula Pulse* entitled *On the Green* by Virge Temme, a local architect. This is a series of 28 stand-alone articles dealing

with green architecture, green building and green building materials. Timme uses several new local Door County building locations to illustrate *On the Green* principles.

In 2006, RETF will be going all out in publicizing the *2006 Solar Home Tour* sponsored by the American Solar Energy Society, and coordinated in Wisconsin by the Midwest Renewable Energy Association. In contrast to past years, RETF plans to locate and publicize solar energy installations in Door County. You can help. If you can participate in the 2006 Solar Home Tour, please contact Don Pardonner as above.

Want to help promote Renewable Energy? Call Pardonner for bumper stickers that say *Renewable Energy is Homeland Security*, available at nominal cost. If you would like to become a working member of RETF, and help create energy independence, again contact Pardonner.



Renewable Energy is
Homeland Security

What a bumper sticker!

Sustainable Development By Ann Hippensteel & Peter Sigmann, MD

Sustainable development is development that meets the needs of the present without compromising the ability of future generations to meet their own needs. It contains two key concepts: the concept of "needs," in particular the essential needs of the world's poor, to which overriding priority should be given; and the idea of limitations imposed by the state of technology and social organization on the environment's ability to meet present and future needs.

(World Commission on Environment and Development. *Our Common Future*. The Brundtland Report. Oxford University Press, 1987, p. 43.)

The Door County Environmental Council was a sponsor of *Sustainable Sweden and its Lessons for Northern Wisconsin*, a presentation, last May, by Mary Rehwald from the city of Ashland, WI. Ashland has made a commitment to become an "eco-community" following the example of many communities in the country of Sweden.

As a result of this presentation a number of interested individuals joined to study the *Natural Step*, a structured curriculum based on the Swedish experience, and discovered many opportunities to move toward sustainability at the levels

of household, town, and county pursuing these four guiding objectives:

1. Eliminate the community's contribution to fossil fuel dependence and to wasteful use of scarce metals and minerals.
2. Eliminate the community's contribution to dependence upon persistent chemicals and wasteful use of synthetic substances.
3. Eliminate the community's contribution to encroachment upon nature.
4. Meet human needs fairly and efficiently.

The currently ongoing comprehensive planning process of the county allows extensive citizen input. Let us be informed and outspoken in order to maintain and enhance the "Door County Experience."

Additional study circles, a series of eight discussions based on the book, *The Natural Step for Communities: How Cities and Towns Can Change to Sustainable Practices*, are underway in Door County. One begins in July in the Southern Door area, another in Sturgeon Bay in September.

Anyone interested in joining can contact Ann Hippensteel (ann@windandsun.com or 743-3337). She coordinates an informal alliance for sustainability in Door County.

What You Can Do for Our Earth

by Eileen Andera, DCEC President

IN THESE DAYS OF coal mining tragedies, mercury-laced fish and reports of global warming, many people would like to use alternative sources for their ever-growing energy needs. We see reports of green sources such as wind, solar and organic materials energy production, but these may not seem practical for our own homes. Not everybody can put a wind turbine in their backyard or retrofit their house with solar panels.

What's a conscientious environmentalist to do?

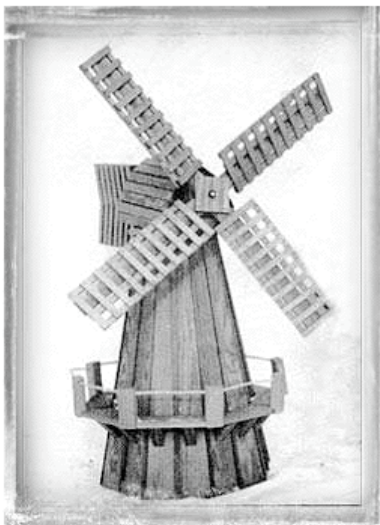
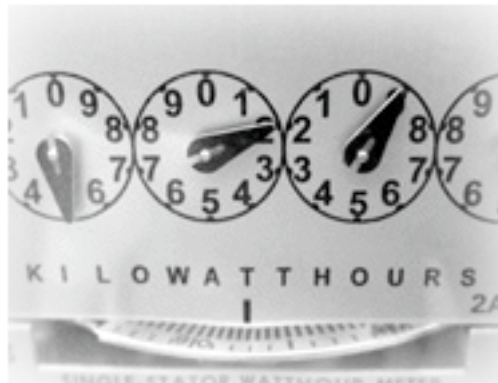
You can still harness the earth's renewable resources, whether you own a suburban house or rent a high-rise apartment, by participating in your local utility company's renewable energy program.

It's a simple program that lets you direct your public utility to buy some of their electricity from renewable sources. That energy is then put into the general electrical grid and used by the system. So, your purchase results in less coal being burned and less related pollution.

At Sturgeon Bay Utilities you buy renewable energy in "blocks." Each block is the equivalent of 150 kilowatt/hours of energy. (1 block for \$3.00 a month, 2 blocks for \$6.00 a month and so on.) These charges are added to your regular monthly bill and reflect the additional costs Sturgeon Bay Utilities pays for green energy.

For information, contact Sturgeon Bay Utilities at 746-2820 or www.sbunet.com. Wisconsin Public Service has a similar program called *NatureWise* at 1-800-450-7260 or www.wisconsinpublicservice.com.

Wherever you live, in state or out of state, check with your local utility company. Sign up now to send a message that you would like to make a difference in reducing pollution. If we all would do it, we could be proud participants in a program that has a direct impact on the quality of our environment. Be part of the solution instead of part of the problem.



An Original Wind Turbine!

Wind Energy on the Go!

IN MARCH, DCEC WAS AWARDED a \$10,000 matching grant from the Wisconsin Focus on Energy Program. This grant was secured for the Community Wind Energy (CWE) subgroup of our Renewable Energy Task Force. It will permit CWE to develop a business and marketing strategy for eventual placement of wind turbines in Door County and to plan, organize and conduct a series of public outreach activities.

After goal-setting consultation with wind industry experts followed by much group discussion, CWE decided that forming a for-profit limited liability corporation would be the best method for achieving their goals:

- to harness the county's wind resources to create enough power to offset our consumption of electricity;
- to educate the public to consider the viability of such a plan;

[see WIND page six]

Shop for the Environment

MANY MEMBERS MAY NOT KNOW that a portion of what you pay for your purchases at **Pick 'N Save** can be earmarked for donation to DCEC!

DCEC is a registered charity with *Pick 'N Save's* **"We Care"** program. *Pick 'N Save* will donate a percentage of your purchases to our organization every time you use your *Pick 'N Save* shopping card.

All you have to do is inform the service desk that DCEC is your charity. (Our number is **173300** in case you need it.) Your purchases will also count if you're shopping at a *Pick 'N Save* away from Door County, too!

Shop, and help support Door County's Environment, all at the same time!

WIND *continued from page five*

- to locate and identify county sites that will best serve as areas to install wind turbines;
- to enter into legal arrangements with farmers, land owners, and government entities; and
- to seek local investment dollars in order to insure local control of the project.

Current members are: Guy Fortin, Sturgeon Bay, Acting Chair; Bill Utley, Sturgeon Bay; Dave Enigl, Egg Harbor; Chris Olson, Sturgeon Bay; Everett Roberts, Sevastopol; and John Hippensteel, Clay Banks.

Phase-one of the project has already started with a series of outreach programs—the first of which was on Wednesday, June 14th at the Egg Harbor Town Hall. Repeat presentations are planned for: Wednesday, July 12th at the Bailey's Harbor Town Hall; Tuesday, August 8th at the Liberty Grove Town Hall; and Wednesday, September 20th at Sevastopol School at Institute. All presentations start at 7:00 pm.

These informational sessions, entitled *Wind Energy, Door County's Next Cash Crop*, are conducted by John Hippensteel, Professional Engineer and recognized expert in the field of renewable energy in Wisconsin and beyond. Please attend one of these presentations. Become aware of the great benefits of locally owned wind generation as opposed to the few detrimental effects that turbines may have.

If you are interested in being involved with the *Community Wind Energy* group or wish to find out more about the long-term objectives, please contact Bill Utley at (920) 746-0401 or dcwind@doorpi.net.

MEGA-FARMS *continued from page one*

Under current State regulations, farmers can spread liquid manure in amounts up to 39,000 gallons per acre. At 43,500 square feet per acre, this allows an amount nearly 9/10ths of a gallon per square foot and is limited to once-a-year application. It is not enforced in most situations.

The proposed revisions would affect 150 farms that now have, or have pending, water quality permits from the state because they exceed 1,000 animals. The DNR is proposing that these operations are required to have six months storage capacity for liquid manure, and are prohibited from spreading of liquid manure on frozen or snow covered ground, unless it's injected or immediately incorporated into the soil.

The proposal would:

- ban the spreading of liquid manure on frozen ground during February and March;
- require farms to follow nutrient management plans based on applying only needed phosphorus to the soil;
- require farms applying manure near lakes and streams to implement runoff reduction practices; and,
- require an emergency response plan to address spills and accidental discharges.

These requirements are essential and very basic to the maintenance of long-term sustainable water supplies for the future use and enjoyment of generations to come.

Political lobbying groups representing farm interests are hard at work trying to keep these revisions from becoming law. So, all the citizens of Wisconsin need to become involved right now and make sure your voice is heard loud and clear: "Protect our waters now and into the future!" [See box on rear page.]

We need to voice our support of these important steps to ensure viable water and recreational resources. They are irreplaceable.

You can contact the chairs of the Senate and Assembly Agriculture Committees and your elected representative to urge the legislature to approve the proposed NR 243 modified rules.

Rep Al Ott, Chair
Assembly Agriculture Committee
(608) 206-5831 or (888) 534-0003

Sen. Dan Kapanke, Chair
Senate Agriculture Committee
(608) 266-5490 or (800) 385-3385



Some Friends in Iowa Speak Out

Do You Love Door County???

Then help us protect it... please.

I support the Door County Environmental Council, working to preserve our heritage of natural resources.
Please enlist me as one of the following: (check enclosed)

Individual Member	\$25	Sustaining Member	\$50-\$99
Family Membership	\$35	Donor	from \$100
		Student/limited Income	\$15

Renewal? _____ New Member? _____ Door County Voter? yes _____ no _____

Name _____

Summer Mailing Address _____

Phone _____

Winter Mailing Address _____

Phone _____

E-mail Address _____ Fax _____

Please name your Door County Municipality (town, village or city) _____

All donations are tax deductible to the extent to the law provides.
DCEC is a nonprofit, tax-exempt organization.
We supply receipts that meet IRS requirements for your gift of \$250 or more.
Thank you for being part of DCEC!

mail to: Door County Environmental Council, Inc. P.O. Box 114, Fish Creek, WI 54212
for more information, call DCEC at 743-6003 email dcec@itol.com

Please contact DCEC if you are interested in volunteering for the Board or special projects.

Visit DCEC on the Internet!
www.dcec.us or
doorcountycompass.com/dcec/

Read the DCEC Column in the *Door Peninsula Voice* (free at many locations.)

Governor James Doyle Room 115E State Capitol Madison WI 53702	Representative Gary Bies PO Box 8952 Madison WI 53708	US Senate Washington DC 20510
Senator Alan Lasee PO Box 7882 Madison WI 53707	WI Senators Russ Feinbold & Herbert Kohl, write them at:	WI Representative Mark Green US House of Representatives Washington DC 20515

DCEC People

PRESIDENT

Eileen Andera
Sturgeon Bay

TREASURER

Bernice Shumway
Sister Bay

1st VICE-PRESIDENT

Jon (Fritz) Renner
Gibraltar

SECRETARIES

Carol Farwell
Ephriam

2nd VICE-PRESIDENT

Phyllis Ingwersen
Sister Bay

Sarah Stuart
Juddville

DIRECTORS

Pat Harris
Fish Creek

James Ingwersen
Sister Bay

Carol Sills
Liberty Grove

Libby Zimmerman
Madison

HONORARY DIRECTORS

Margaret Cowles
Tony Haswell
Flora Langlois
John Wilson
Karen Wilson

STAFF

Executive Director
Jerry Viste
Sturgeon Bay

Membership Coordinator
Ray Kostjuk
Fish Creek

Outreach Coordinator
Ralph Valatka*
Sturgeon Bay

* Newsletter Editor



door county
 environmental council, inc.
 p.o. box 114
 fish creek, wi 54212

Non-Profit Org.
 U.S. Postage
 PAID
 Fish Creek WI 54212
 Permit No. 15

Help! We're Being Invaded!
DCEC's Annual Summer Program
August 16th—Baileys Harbor Town Hall

Mega-Farm Opponent at Crossroads Sept. 27th

DCEC IS PROUD to be bringing Russ Tooley of *Centerville Cares* to Crossroads at Big Creek on Wednesday, September 27th, 7 pm. Tooley will be presenting a hard-hitting and graphic power-point presentation, also entitled *Centerville Cares*.

Centerville Cares tells the story of a group of neighbors who are waging a successful, on-going battle with the *Maple Leaf Dairy* mega-farm near Cleveland, Wisconsin. Your nose may have noticed aromas from this farm as you've driven by on I-43, over a mile east!

Tooley's program illustrates the problems his community has faced with this mega-farm in protecting their air, land and watershed, and how they've solved them. He's played to rave reviews at community groups throughout Wisconsin.

Mega-farms are fast becoming an issue of concern in Door County, so be sure to attend this real-facts presentation. Learn how we can address some of the serious problems associated with big agricultural operations. [See related story page one.]

Leave A Legacy to DCEC!

MANY INDIVIDUALS AND FAMILIES are making plans to support volunteer organizations such as DCEC when they legalize their estate and asset transfers.

We have on-going programs such as our ***Annual Essay Contest*** that could be underwritten by a legacy, or supportive grant, to ensure your funding would receive wide recognition in our community.

The DCEC Endowment Fund, established in 1985, is a growing secure account to ensure the long-range functions of our organization.

Either of these funding opportunities would be a perfect show of support for the environmental protection of our county now and far into the future.

The fight for Door County's Environment **starts today, every day!**

...and, after you read this newsletter, please pass it along to a friend.